

STEP ONE: Download Cipher Responder™.

Cipher is distributed in a self-extracting installer; a small program that will unzip and install Cipher on your PC. You don't need any external programs to install and setup Cipher on your PC, just follow the instructions below.

*In these instructions we assume you are using **Windows 98, 2000, XP, NT.***

Now you're ready to download the Cipher Responder™ from our [download site](#) and save it to your hard disk. The file is named [setup.exe](#).

STEP TWO: Installing Cipher

Once you have downloaded the Cipher Responder™, you are ready to install it. During the install procedure Cipher's files will be automatically extracted from the setup file and all necessary steps for starting Cipher will be taken. If you're upgrading an older version of Cipher you will be able to keep all your old settings.

Locate the Cipher setup which you just downloaded and saved to your hard disk. It is named setup.exe.

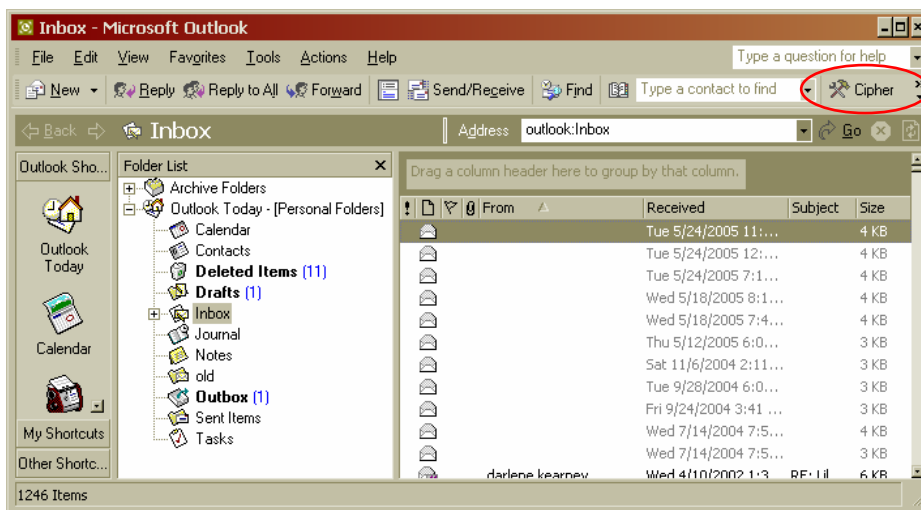
To start the installation process just double click on the executable. The installation program will be started automatically.

Select 'OK' and you're done! The installer will take care of all the work.

STEP THREE: Setting up Cipher

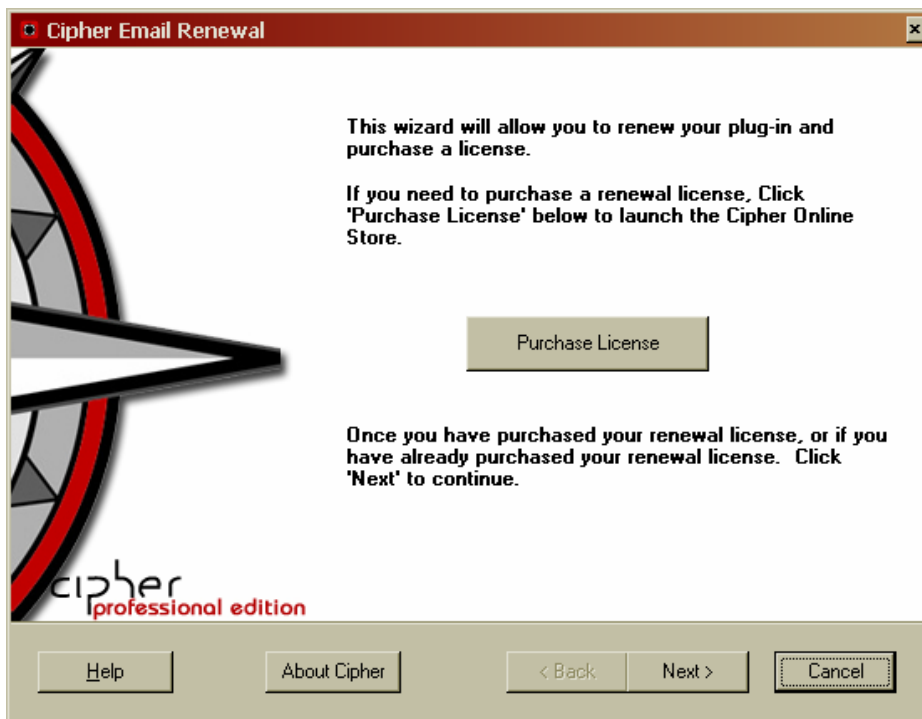
Now that Cipher is installed on your PC the program is ready to use and Cipher icon is available in your Outlook™ tool bar, this is what is required to set it up:

First if Outlook is running shut it down and restart it. You will now see the Cipher command button in your outlook tool bar. Click it.



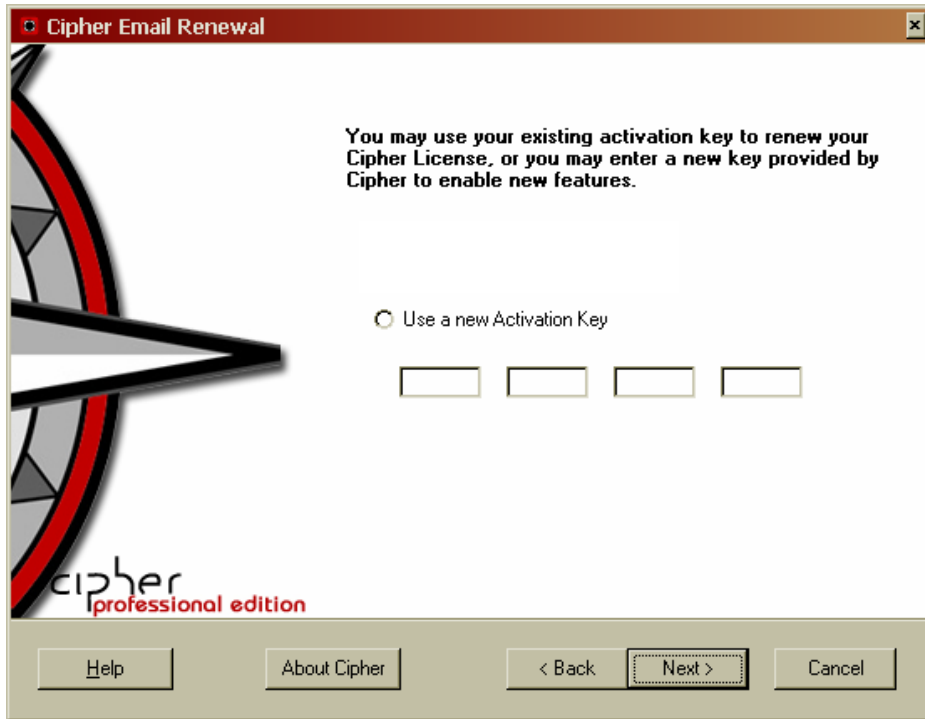


This will bring you to the options menu. Select "Renew your Cipher license" and click next.

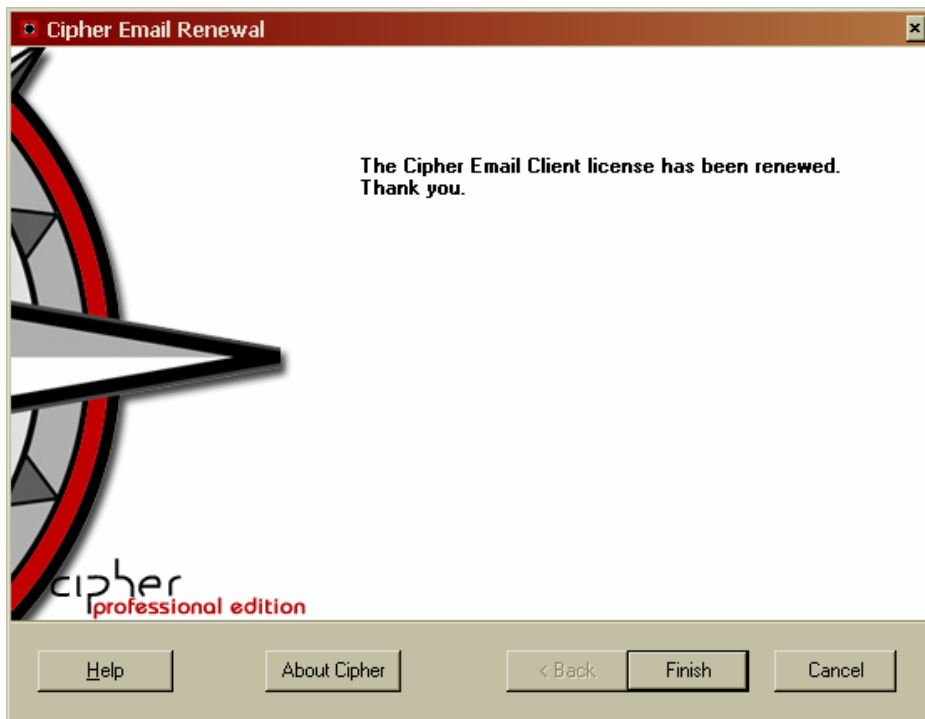


:NOTE: If you have not already purchased your Cipher activation code select "Purchase License" and return to this step.

Click next.



Enter in your activation code and click next.



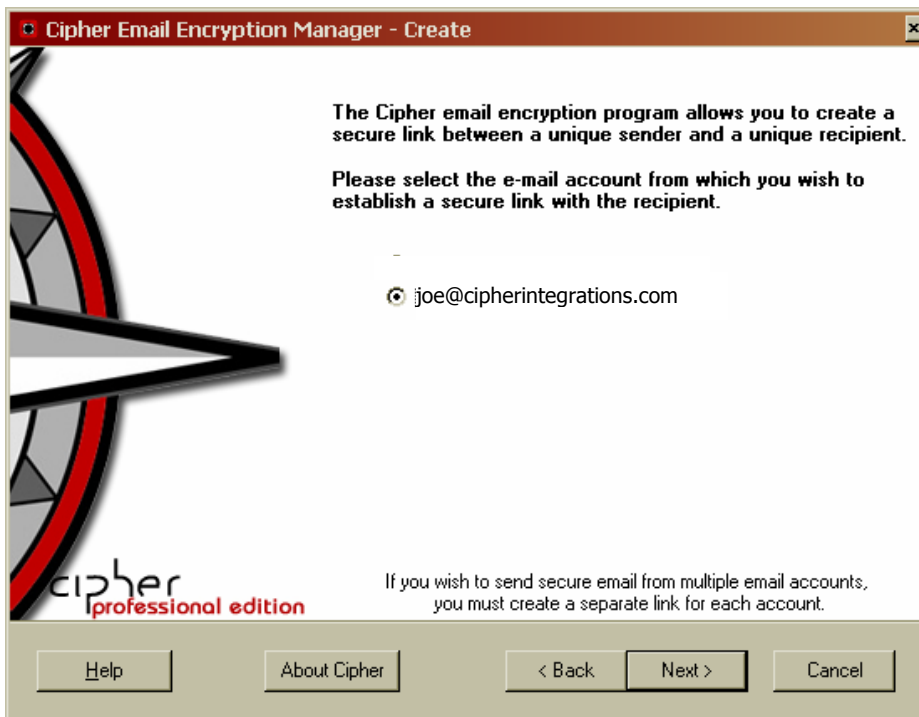
You are now ready to start using CIPHER to create CIPHER Secure Links™.

STEP FOUR: Using Cipher

Click the Cipher button to open the options menu.



To create a new secure link select the "Create a New Secure Link" option and click next.



Select your email account that you want to use to create your link with and click next.

Cipher Email Encryption Manager - Create

Enter the email address of the recipient with whom you wish to create a secure link using Cipher e-mail encryption, or click Browse to select the recipient from your Address Book.

E-mail Address:

Name of Contact:

Cipher Secure Links are maintained until you revoke them from the 'Manage Secure Links' window. You may specify a link life after which the link will be displayed in red to remind you to revoke or renew the link.

Never Expire Link

Link Life (In Days)

Help About Cipher < Back Next > Cancel

cipher professional edition

Follow the on screen instructions. If you wish to expire the link uncheck the "Never Expire Link" box and enter in desired link life.

Passphrase Authentication: This option allows the sender of the Cipher Secure Link™ to create a passphrase in order to authenticate the recipient. The recipient must contact the sender. We recommend either in person or by phone. This method eliminates the hassle and confusion of searching for the correct public key on some random server. It also brings the human element back into the trust model.

Pass Phrase Authentication

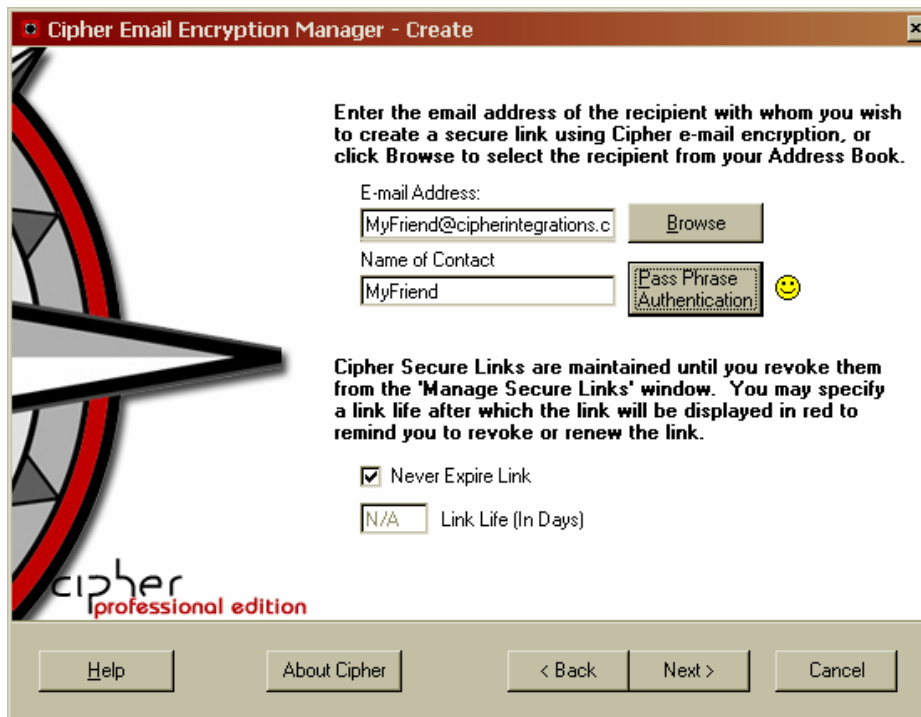
Enter Pass Phrase Hide Typing

Pass Phrase Strength:

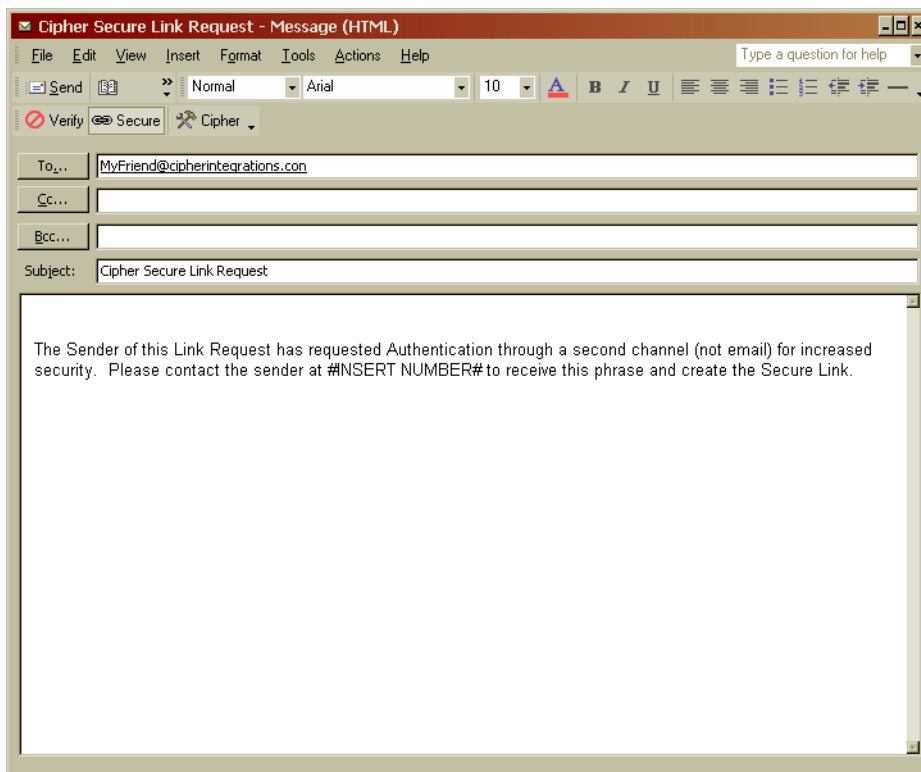
Re-enter Pass Phrase

OK

Enter in your passphrase and click ok.



If you chose to utilize Passphrase Authentication you will receive a “Good Job” happy face for being a responsible security minded person! Click next.



Cipher will automatically generate an outgoing email to the recipient for you. You may customize it as you please. Click send. It is that easy.

The recipient will receive an email notifying them of your request. They just need to follow the steps of downloading and installing the Cipher Responder™. The Cipher Responder™ will only “respond” to the sending Cipher Professional™ or Cipher Personal™. Cipher Responder™ is not capable of creating a new Cipher Secure Link™.

For further assistance please feel free to [contact us](#) and HAPPY Encrypting!